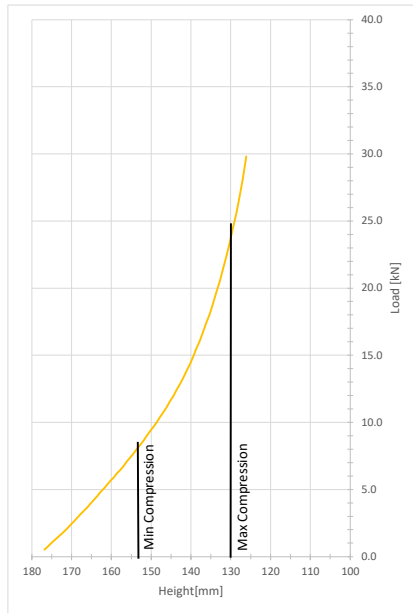
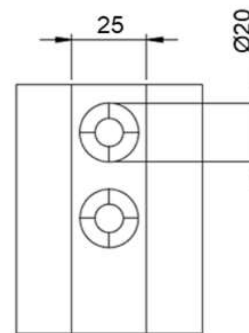
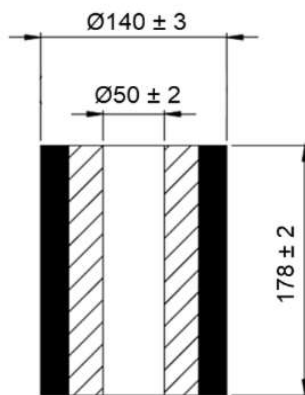


## Continental SAM

DN 140 DH 178 IN 50



Compression [%]	15	20	22.5	25	27.5
Load [kN]	8.6	12.9	15.5	19.6	24.4
Height [mm]	152	143	139	134	129
Spring Rate [kN/m]	395	560	723	979	1350
Effective Deflection [mm]	22	23	21	20	18
Natural Frequency [Hz]	3.4	3.3	3.4	3.5	3.7
Maximum OD [mm]	151	156	158	161	163
Weight [Kg]	2.36				



Continental SAM is the solution for spring replacement and vibration isolation.  
With its resistant, durable and economical design it helps to cut costs in nearly all industrial applications.

- › better working conditions due to a dramatically reduced noise level
- › reduced downtimes
- › compact design
- › high load-bearing capacity
- › reliable even in damp or corrosive conditions
- › maintenance-free
- › safe due to the absence of moving parts
- › reliable even in extreme temperatures (-40°F to 167°F, -40°C to +75°C)